

Canon and Nikon Announce Full Frame Mirrorless Cameras

Will they replace DSLRs?

Camera Selection

- Modern cameras have many features
- How well do features work?
- Base camera selection your needs
- This presentation will consider only mirrorless feature

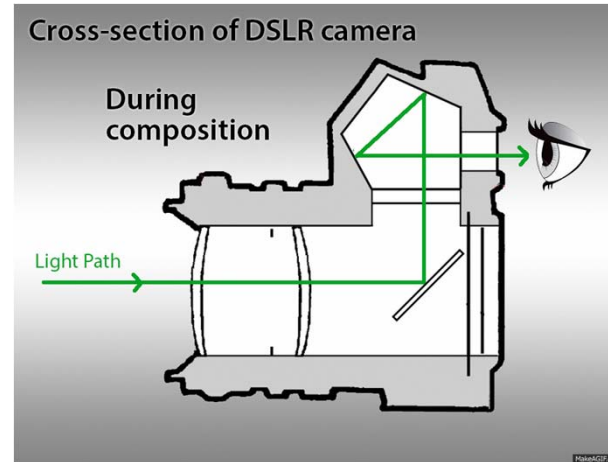
Source of Most Ideas Shown













- Panasonic GH5
- Sony PXWx70
- Canon XH A1



Definitions

- SLR
- Full Frame



			
Full Frame 36.00 x 24.00 mm	APS-H 27.90 x 18.60 mm	APS-C 23.60 x 15.60 mm	APS-C (Canon) 22.20 x 14.80 mm
			
1.5" 18.70 x 14.00 mm	Micro Four Thirds 4/3" 17.30 x 13.00mm	1" 12.80 x 9.60 mm	1/1.2" 10.67 x 8.00 mm
			
2/3" 8.80 x 6.60 mm	1/1.7" 7.60 x 5.70 mm	1/2.3" 6.17 x 4.55 mm	1/3.2" 4.54 x 3.42 mm

Evolution of DSLRs

- 1960s - go to cameras for serious photogs
- 1970s to 2000s – auto exposure and focus
- New lenses
- 2000's to present digital sensors

Current DSLRs

- Pros
 - High resolution
 - Accurate auto focus
 - High frame rates
- Cons
 - Hard to preview shot

Current Photo Practice

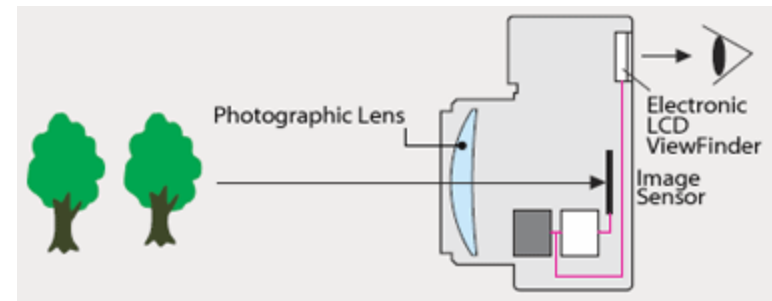
- Shoot RAW
- Finish in Photoshop

Photoshop Pros & Cons

- Pros
 - Nearly unlimited control
- Cons
 - Learning curve
 - Time spent editing
 - Inability to remember/recreate scene
 - Processed look (sometimes)

Mirrorless = EVF

- Mirrorless sounds diminished
- Benefit is Electronic Viewfinder (EVF)
- EVFs are the key to advanced capabilities



EVF vs. Mirror Advantages

- See how picture will look
- Advanced in camera image adjustments
- Open the way to new features
- Quality of EVF varies among cameras

- Most every photo can be improved by post processing

Adjust in Camera Pros and Cons

- Pros
 - Capture the scene as you see it
 - Minimal post processing
 - Raw / Photoshop option available
- Cons
 - Slower shooting

Making Wild Bill



EVF vs. Live View

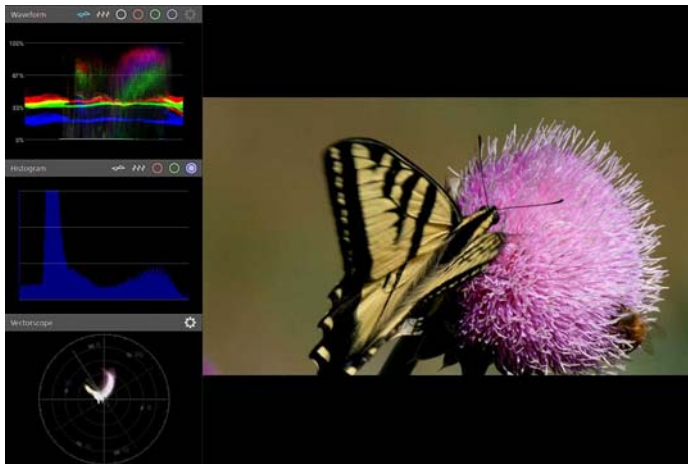
- Keep camera at eye level
- Very high resolution
- Full field of vision
- Shaded from light

Toking

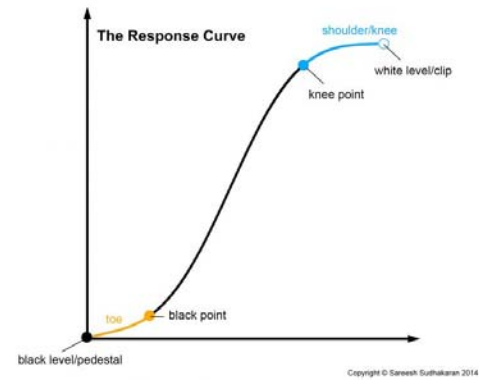


Live Broadcast TV Tools

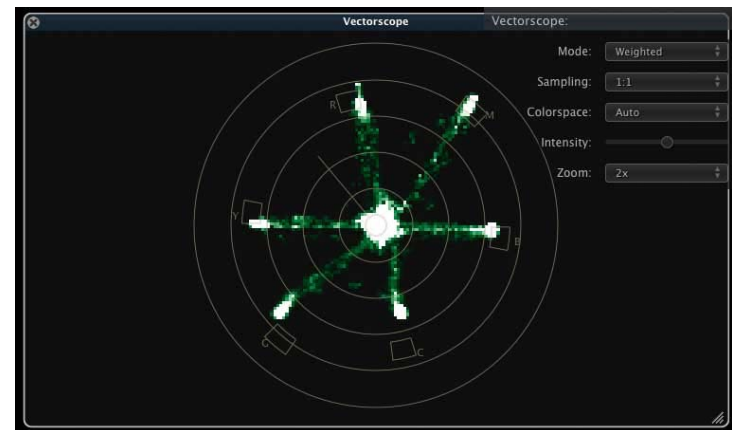
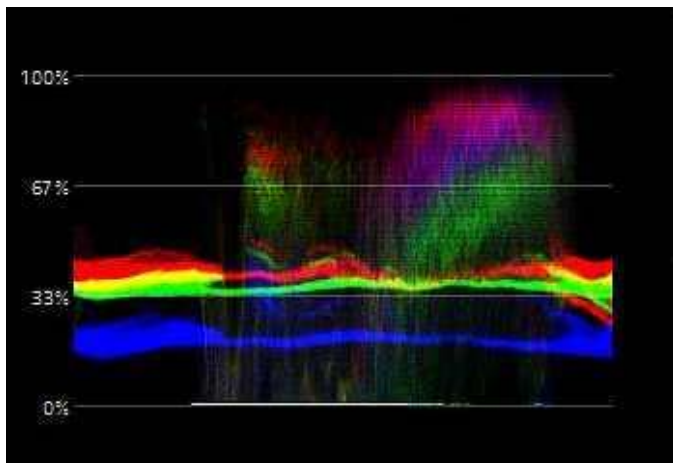
Wave form monitor



Sensor response curve



Vector scope



Color Calibration

- Camera calibration
 - Reference color card
 - High CRI light
 - Vector scope
- Monitor Calibration
- What you see is what you get

Color Calibration



Panasonic Lumix GH5

- 5th generation mirrorless
- Stills and movies
- Cult camera for low budget movies
- Loaded with features

GH5 Frustrations

- Bloated disorganized menus
- Sketchy documentation

Multiple Aspect Ratios

- 1x1 (square)
- 4x3
- 3x2
- 16 x 9
- 2.3x1

Focus Controls

- Peaking
 - Focus ring
 - Iris
- Touch focus

Focus Stacking

- Camera records images at all focus areas
- Choose all or range of focus areas
- Camera combines
- Mark will demonstrate

Exposure Aids

- See exposure
- Meter / histogram
- Vebra stripes
- Wave form monitor
- Modify sensor response curve
 - I Dynamic
 - Highlight and shadow

Styles

- Color
- Monochrome
- Log – modified response curve
- RAW

Color Adjustments

- Sharpness
- Contrast
- Saturation
- Hue
- Filters

White Balance Controls

- Presets
- Kelvin
- Matrix

High Frame Rates

- Movie slow motion – 180 FPS
- Still burst mode – 60 18 MP per sec
 - Select frame and process in camera

Dual Image Stabilization

- In body (moving sensor)
- In lens
- Reduces need for tripod

Wireless Control

- Free cell phone app from Panasonic

Is Mirrorless for You?

- The features shown may or may not be offered by Canon and Nikon
- EVF is only one of a cameras features and specifications
- How do you shoot?
- How much do you like Photoshop?

Will DSLRs Disappear

- Mark
- Mary Pat